

Author: Sanjay Sansanwal

Title: Configuring FileCM with Index Services

The information in this article applies to:

- FileCM 2.6, 3.0, 3.5, 3.5.1,3.5.2, 4 and 4.2
- Microsoft Windows 2000 Professional, Windows XP
- Microsoft Windows 2000 Server and 2003 Server
- Office 2000, Office XP, Office 2003,Office 2007

---

## SUMMARY

Moderate-High: Requires SQL and Windows Component knowledge, network file services skills and interoperability skills.

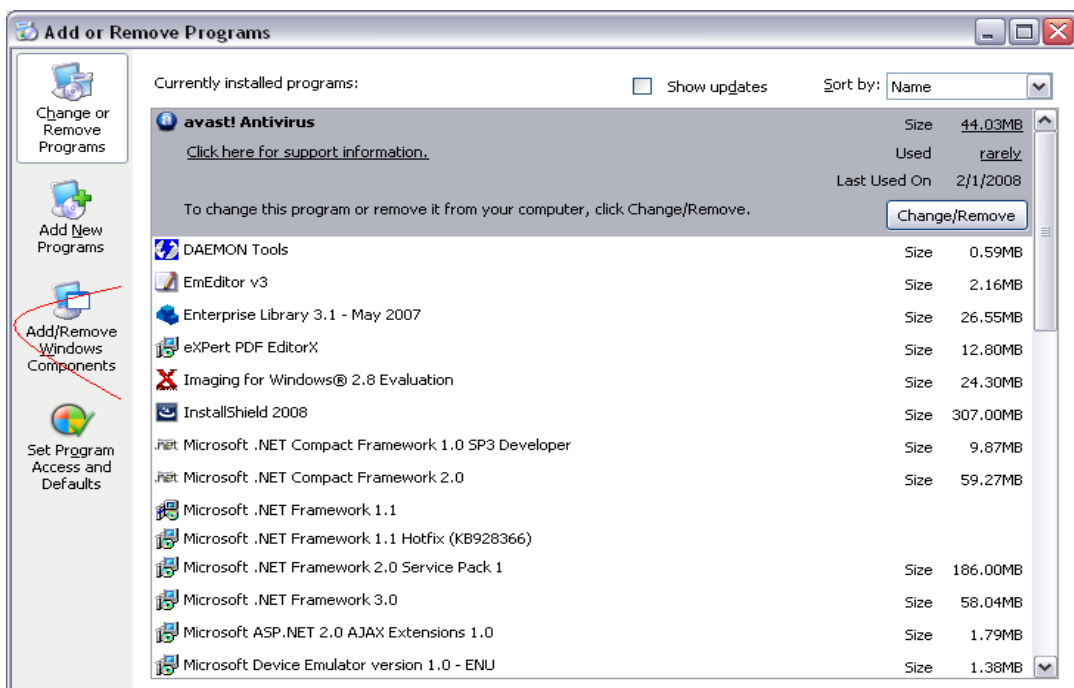
This article explains how to configure FileCM with Microsoft Index server. This will enable users to use the advanced search function within FileCM which use Microsoft Index server capability.

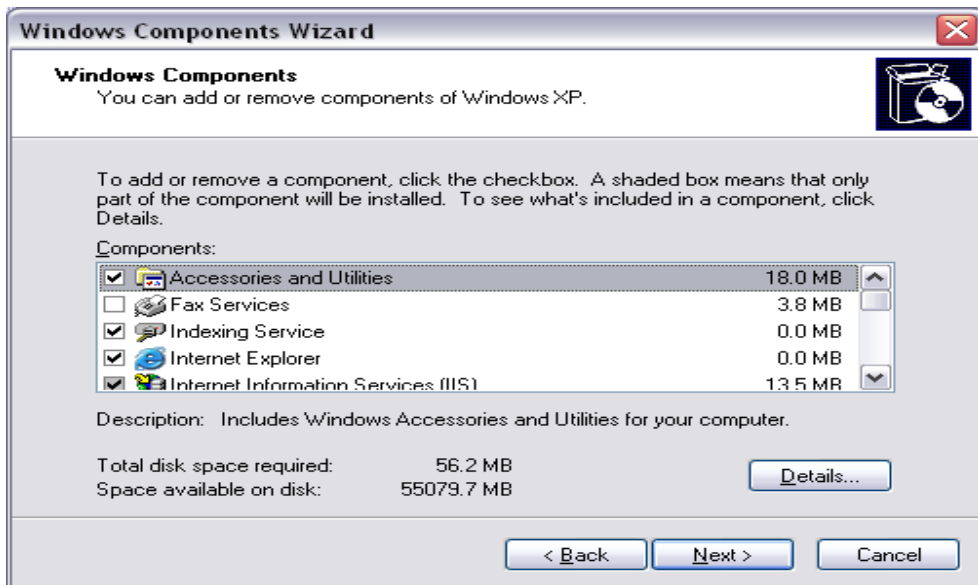
This article assumes that you are familiar with administering and configuring applications. For more information about Microsoft Excel, or SBS FileCM, please refer to your product documentation.

This article assumes you are familiar with administering FileCM.

## Process

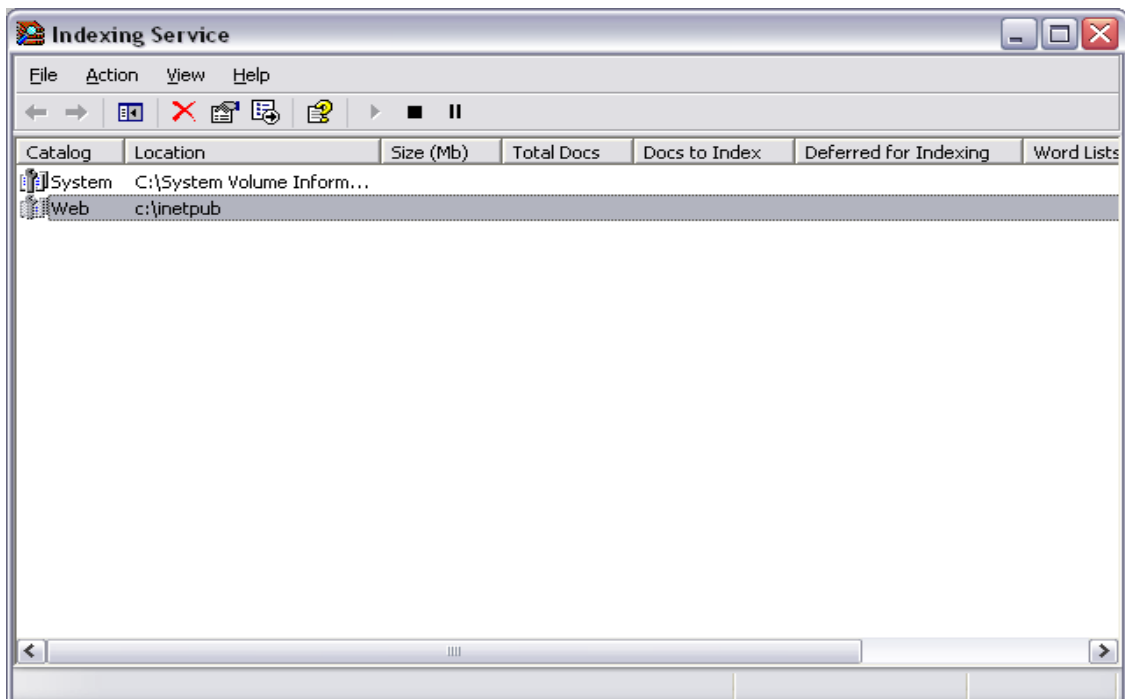
- Go to CONTROL PANEL
- Click on ADD\REMOVE Program
- Click on Add/Remove Windows Components



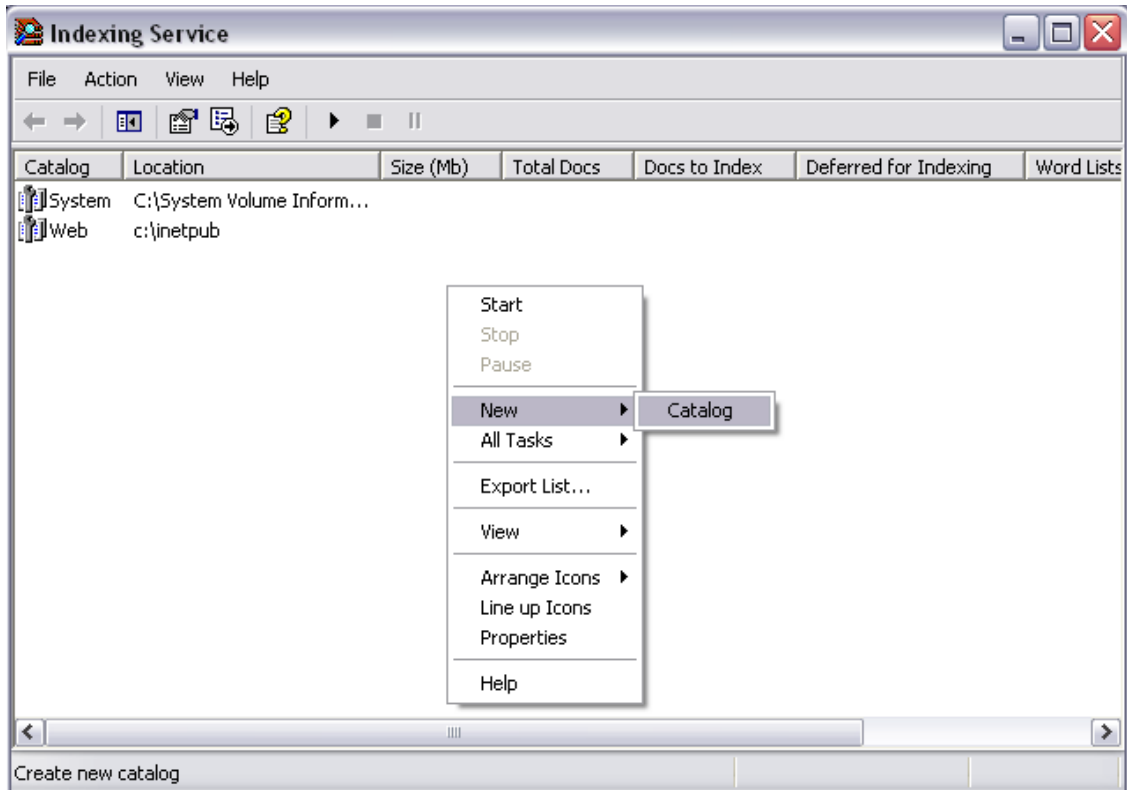


Make sure Indexing Service is installed

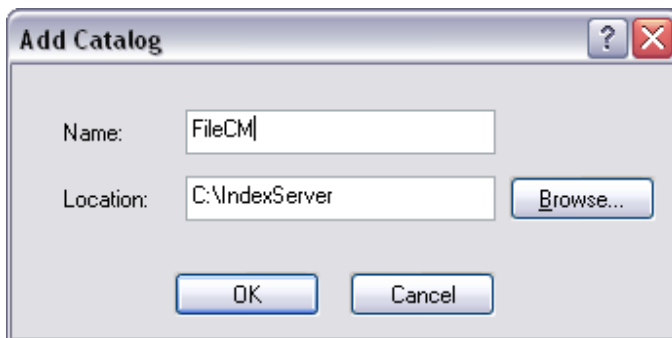
- To configure Indexing Service, go to the Run dialog box on the Start menu, type Ciadv.msc in the Open text box, and click OK



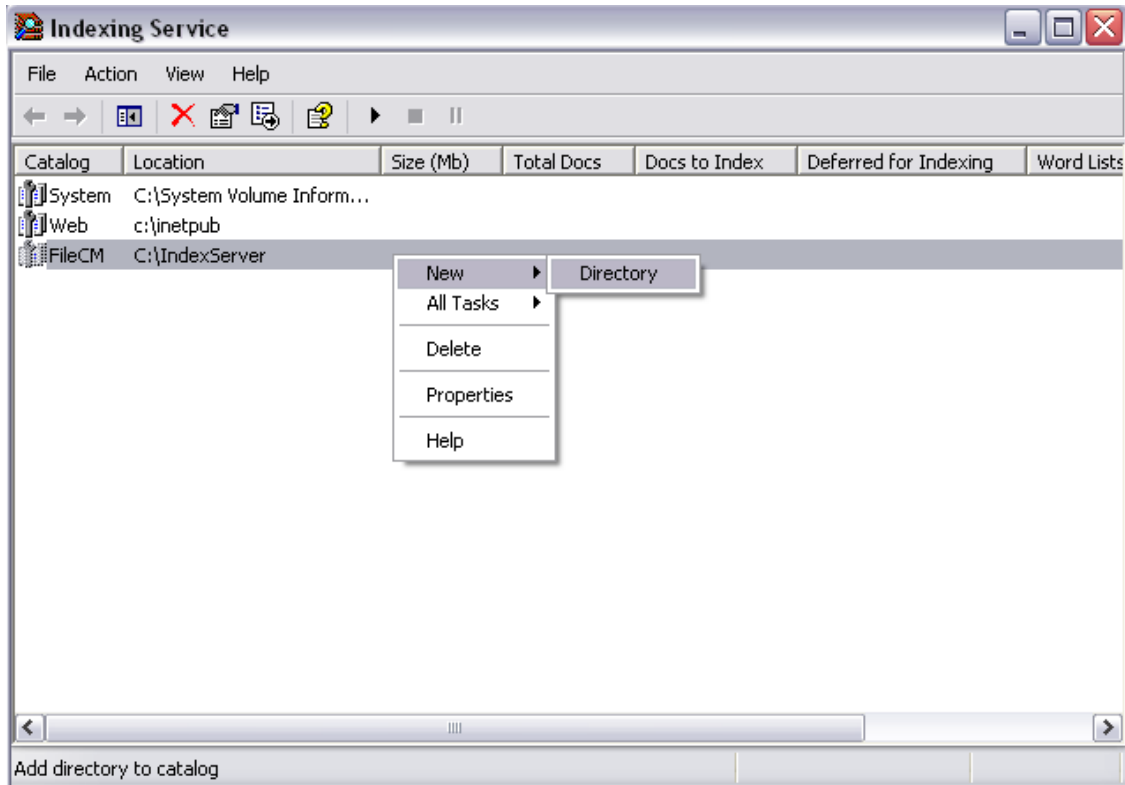
- Right click in empty space and select to create new Catalog



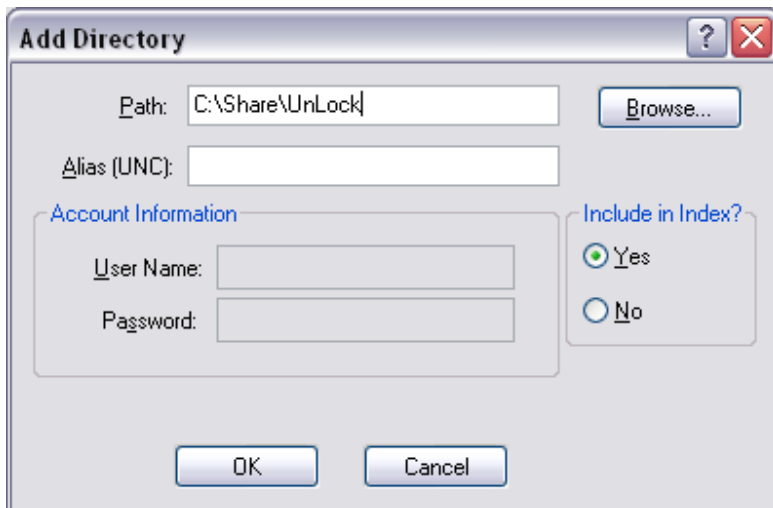
- Enter Name and a default location(could be any path)



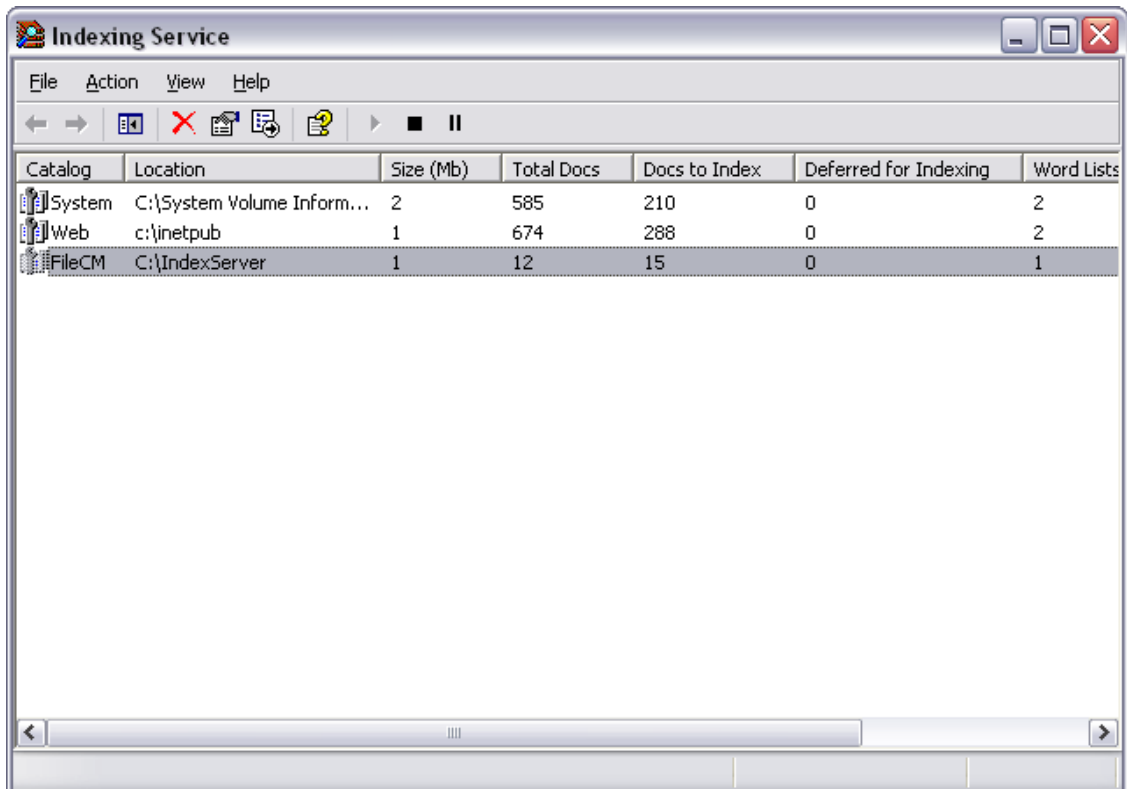
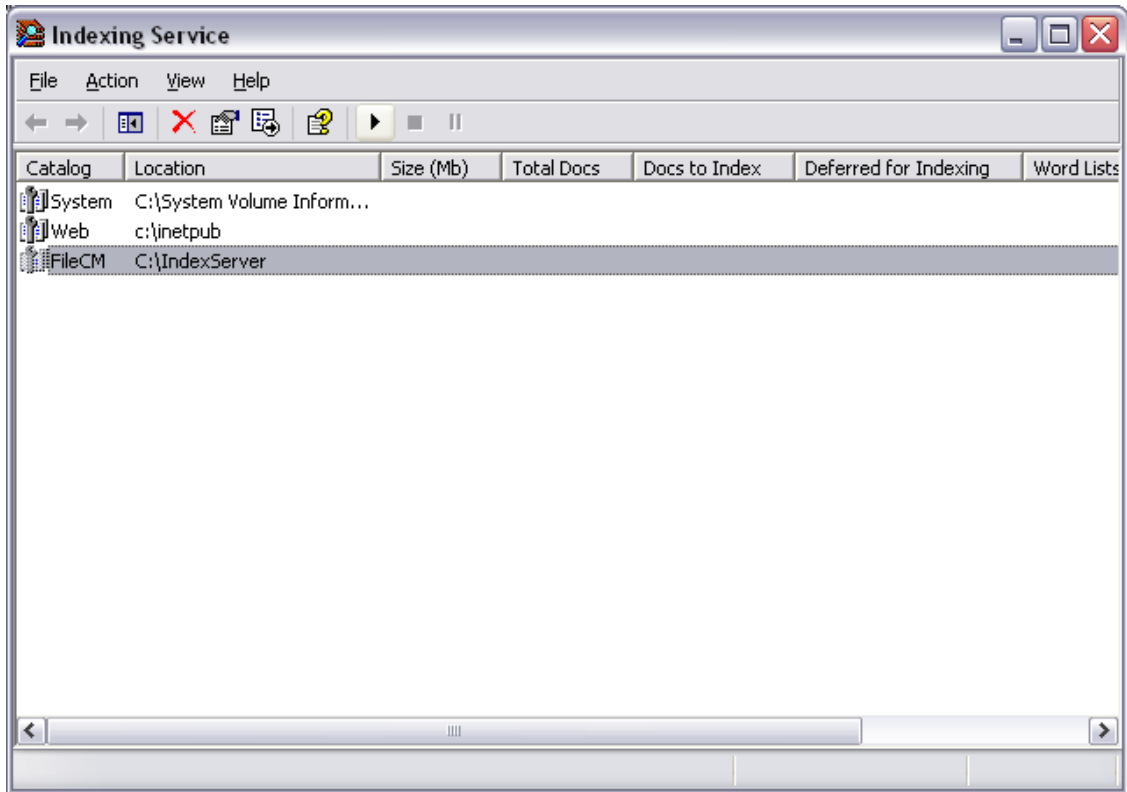
- Right click on the Catalog created and select New-Directory

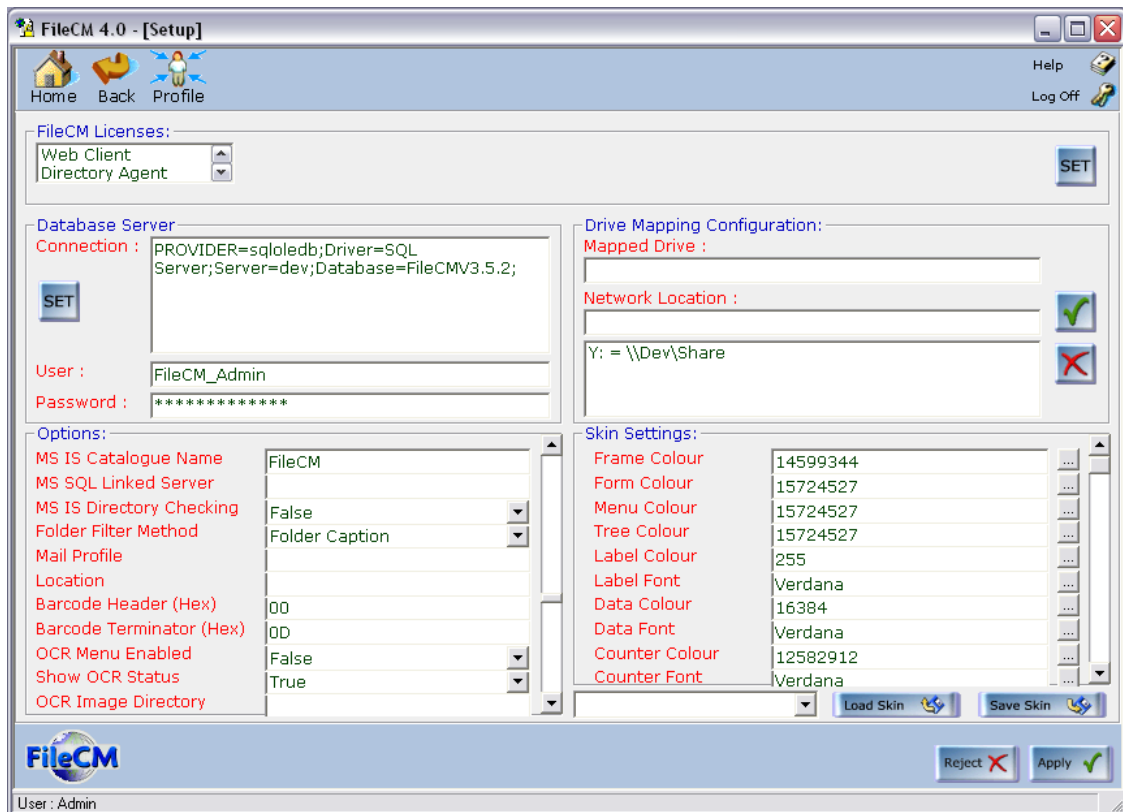


- Enter your FileCM OSStore location and Press OK. The OSStore is the windows folder on the network where the electronic files are stored that are accessed and managed by FileCM.



- Start the Service Pressing the PLAY button





- Open FileCM Setup setting screen on the server and enter the Catalog name created in Indexing Service against “MS IS Catalogue Name”. Select Apply and the close. {Use “appadmin” logon and “password” as the password to access FileCM Server client set up screen as below}
- For Remote and Intranet installations of FileCM, Ifilters for PDF and .MSG need to be installed on the server. Office also needs to be installed on the server if Office documents are to be indexed and searched
- For PCClient and Web installation (where the local host machine is used i.e.http:\\localhost\\FileCM) Ifilters for PDF and .MSG need to be installed on the server and each pc using FileCM. Office also needs to be installed on the server and each machine if Office documents are to be indexed and searched. Failure to do this will return different results from each machine as each machine has a FileCM catalogue.

Copyright SBS Ltd, 2010.